



CAÑIFLEX

desde 1984

CATÁLOGO

REV. MARZO 2025

INGENIERÍA Y SOLUCIONES
PARA LA CONDUCCIÓN DE FLUIDOS



CODOS 90° (Serie 900)

Los codos forjados a 90°, son un componente de interconexión ineludible en la ingeniería de fluidos, diseñado para modificar la trayectoria del fluido en ángulo recto. Más allá de ser un simple cambio de dirección, su diseño y fabricación son cruciales para mantener la integridad estructural y la eficiencia operativa de todo el sistema hidráulico. Disponibles en una gran variedad de configuraciones, combinando distintos tipos de roscas y asientos. -

ISO 9001



GESTION
DE LA CALIDAD
PL-9001-1128
ISO 9001:2015
Administración SC 004

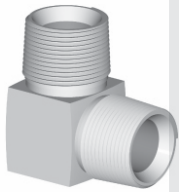
IATF 16949



www.caniflex.com.ar

911

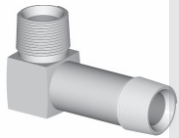
CODO A 90° R. CÓNICA "NPT" EN AMBOS EXTREMOS



Código Cañiflex	CÓDIGO	Rosca Extremo 1 Cónica NPT Ext.	Rosca Extremo 2 Cónica NPT Ext.
T001225	C 911-2-2	1/8 - 27 H	1/8 - 27 H
T001226	C 911-4-4	1/4 - 18 H	1/4 - 18 H
T020209	C 911-4-6	1/4 - 18 H	3/8 - 18 H
T001227	C 911-6-6	3/8 - 18 H	3/8 - 18 H
T018867	C 911-8-6	1/2 - 14 H	3/8 - 18 H
T019467	C 911-8-8 PR	1/2 - 14 H	1/2 - 14 H
T001229	C 911-8-8	1/2 - 14 H	1/2 - 14 H
T001230	C 911-8-12	1/2 - 14 H	3/4 - 14 H
T001231	C 911-12-12	3/4 - 14 H	3/4 - 14 H
T001232	C 911-12-16	3/4 - 14 H	1" - 11 1/2 H
T001233	C 911-16-16	1" - 11 1/2 H	1" - 11 1/2 H
T024231	C 911-16-20	1" - 11 1/2 H	1"1/4 - 11 1/2 H
T001234	C 911-20-20	1"1/4 - 11 1/2 H	1"1/4 - 11 1/2 H
T036170	C 911-24-24	1"1/2 - 11 1/2 H	1"1/2 - 11 1/2 H

L-911

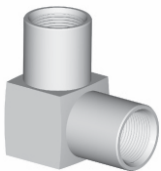
CODO A 90° R. CÓNICA "NPT" Y "LARGO" R. CÓNICA "NPT"



Código Cañiflex	CÓDIGO	Rosca Extremo 1 Cónica NPT Ext.	Rosca Extremo 2 Cónica NPT Ext.
T001235	C L 911-2-2	1/8 - 27 H	1/8 - 27 H
T001236	C L 911-4-4	1/4 - 18 H	1/4 - 18 H
T001237	C L 911-6-6	3/8 - 18 H	3/8 - 18 H
T001238	C L 911-8-8	1/2 - 14 H	1/2 - 14 H
T001239	C L 911-12-12	3/4 - 14 H	3/4 - 14 H
T001240	C L 911-16-16	1" - 11 1/2 H	1" - 11 1/2 H

911

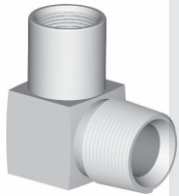
CODO A 90° R. CÓNICA "NPT" INTERIOR EN AMBOS EXTREMOS



Código Cañiflex	CÓDIGO	Rosca Extremo 1 Cónica NPT Int.	Rosca Extremo 2 Cónica NPT Int.
T001256	C 911-2I-2I	1/8 - 27 H	1/8 - 27 H
T049990	C 911-2I-4I	1/8 - 27 H	1/4 - 18 H
T001257	C 911-4I-4I	1/4 - 18 H	1/4 - 18 H
T001258	C 911-6I-6I	3/8 - 18 H	3/8 - 18 H
T001259	C 911-8I-8I	1/2 - 14 H	1/2 - 14 H
T001260	C 911-12I-12I	3/4 - 14 H	3/4 - 14 H
T001261	C 911-16I-16I	1" - 11 1/2 H	1" - 11 1/2 H

911

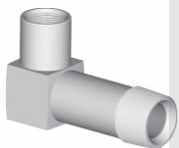
CODO A 90° R. CÓNICA "NPT" INTERIOR Y R. CÓNICA "NPT" EXTERIOR



Código Cañiflex	CÓDIGO	Rosca Extremo 1 Cónica NPT Int.	Rosca Extremo 2 Cónica NPT Ext.
T001241	C 911-2I-2	1/8 - 27 H	1/8 - 27 H
T035994	C 911-4I-2	1/4 - 18 H	1/8 - 27 H
T001242	C 911-4I-4	1/4 - 18 H	1/4 - 18 H
T001243	C 911-4I-6	1/4 - 18 H	3/8 - 18 H
T001245	C 911-4I-8	1/4 - 18 H	1/2 - 14 H
T001244	C 911-6I-6	3/8 - 18 H	3/8 - 18 H
T001246	C 911-6I-8	3/8 - 18 H	1/2 - 14 H
T015450	C 911-8I-6	1/2 - 14 H	3/8 - 18 H
T001222	C 911-8I-8	1/2 - 14 H	1/2 - 14 H
T039578	C 911-8I-8 PR 1,00 MM	1/2 - 14 H	1/2 - 14 H
T001247	C 911-8I-8 PR 1,25 MM	1/2 - 14 H	1/2 - 14 H
T038974	C 911-8I-8 PR 1,50 MM	1/2 - 14 H	1/2 - 14 H
T023980	C 911-8I-8 CON VALVULA	1/2 - 14 H	1/2 - 14 H
T001248	C 911-12I-12	3/4 - 14 H	3/4 - 14 H
T001249	C 911-16I-16	1" - 11 1/2 H	1" - 11 1/2 H
T020036	C 911-20I-20	1"1/4 - 11 1/2 H	1"1/4 - 11 1/2 H

L-911

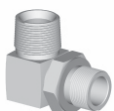
CODO A 90° R. CÓNICA "NPT" INTERIOR Y "LARGO" R. CÓNICA "NPT"



Código Cañiflex	CÓDIGO	Rosca Extremo 1 Cónica NPT Int.	Rosca Extremo 2 Cónica NPT Ext.
T001250	C L-911-2I-2	1/8 - 27 H	1/8 - 27 H
T001251	C L-911-4I-4	1/4 - 18 H	1/4 - 18 H
T001252	C L-911-6I-6	3/8 - 18 H	3/8 - 18 H
T001253	C L-911-8I-8	1/2 - 14 H	1/2 - 14 H
T001254	C L-911-12I-12	3/4 - 14 H	3/4 - 14 H
T001255	C L-911-16I-16	1" - 11 1/2 H	1" - 11 1/2 H

918

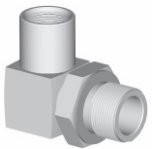
CODO A 90° R. CÓNICA "NPT" Y ASIENTO AROSELLO R. "UNF"



Código Cañiflex	CÓDIGO	Rosca Extremo 1 Cónica NPT Ext.	Rosca Extremo 2 UNF Ext.
T001250	C 918-4-4	1/4 - 18 H	9/16" - 18 H
T001251	C 918-6-4	3/8 - 18 H	9/16" - 18 H
T001252	C 918-6-6	3/8 - 18 H	3/4" - 16 H
T001253	C 918-8-6	1/2 - 14 H	3/4" - 16 H
T001254	C 918-8-8	1/2 - 14 H	7/8" - 14 H
T001255	C 918-12-10	3/4 - 14 H	1"1/16 - 12 H

918

CODO A 90° R. CÓNICA "NPT" INTERIOR Y ASIENTO AROSELLO R. "UNF" EXTERIOR



Código Cañiflex	CÓDIGO	Rosca Extremo 1 Conica NPT Int.	Rosca Extremo 2 UNF Ext.
T001266	C 918-4I-4	1/4 - 18 H	9/16" - 18 H
T001267	C 918-6I-6	3/8 - 18 H	3/4" - 16 H
T001269	C 918-6I-8	3/8 - 18 H	7/8" - 14 H
T001268	C 918-8I-6	1/2 - 14 H	3/4" - 16 H
T001270	C 918-8I-8	1/2 - 14 H	7/8" - 14 H
T025265	C 918-12I-6	3/4 - 14 H	3/4" - 16 H

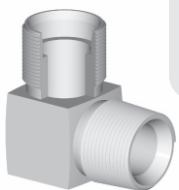
L 918

CODO A 90° R. CÓNICA "NPT" Y ASIENTO AROSELLO R. "UNF" LARGO

Código Cañiflex	CÓDIGO	Rosca Extremo 1 Conica NPT Ext.	Rosca Extremo 2 UNF Ext.
T034579	C L 918-6-6	3/8" - 18 H	3/4" - 16 H
T001540	C L 918-8-6	1/2" - 14 H	3/4" - 16 H
T001541	C L 918-8-8	1/2" - 14 H	7/8" - 14 H

921

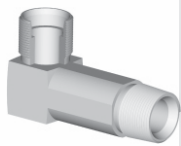
CODO A 90° ALOJAMIENTO VIROLA R. "UNF" Y R. CÓNICA "NPT"



Código Cañiflex	CÓDIGO	Rosca Extremo 1 UNF Ext.	P/ Tubo Diám. Ext.	Rosca Extremo 2 Cónica NPT Ext.
T001271	C 921-1-2	3/8" - 24 H	3/16"	1/8" - 27 H
T001275	C 921-1-4	3/8" - 24 H	3/16"	1/4" - 18 H
T001272	C 921-2-2	7/16" - 20 H	1/4"	1/8" - 27 H
T001276	C 921-2-4	7/16" - 20 H	1/4"	1/4" - 18 H
T001273	C 921-3-2	1/2" - 20 H	5/16"	1/8" - 27 H
T001277	C 921-3-4	1/2" - 20 H	5/16"	1/4" - 18 H
T001274	C 921-4-2	9/16" - 18 H	3/8"	1/8" - 27 H
T001278	C 921-4-4	9/16" - 18 H	3/8"	1/4" - 18 H
T001281	C 921-4-6	9/16" - 18 H	3/8"	3/8" - 18 H
T001285	C 921-4-8	9/16" - 18 H	3/8"	1/2" - 14 H
T001279	C 921-6-4	3/4" - 16 H	1/2"	1/4" - 18 H
T001282	C 921-6-6	3/4" - 16 H	1/2"	3/8" - 18 H
T001286	C 921-6-8	3/4" - 16 H	1/2"	1/2" - 14 H
T001280	C 921-8-4	7/8" - 14 H	5/8"	1/4" - 18 H
T001283	C 921-8-6	7/8" - 14 H	5/8"	3/8" - 18 H
T001287	C 921-8-8	7/8" - 14 H	5/8"	1/2" - 14 H
T031458	C 921-8-12	7/8" - 14 H	5/8"	3/4" - 14 H
T001284	C 921-10-6	1"1/16 - 12 H	3/4"	3/8" - 18 H
T001288	C 921-10-8	1"1/16 - 12 H	3/4"	1/2" - 14 H
T001290	C 921-10-12	1"1/16 - 12 H	3/4"	3/4" - 14 H
T001289	C 921-12-8	1"3/16 - 12 H	7/8"	1/2" - 14 H
T001291	C 921-12-12	1"3/16 - 12 H	7/8"	3/4" - 14 H
T001292	C 921-14-12	1"5/16 - 12 H	1"	3/4" - 14 H
T001293	C 921-14-16	1"5/16 - 12 H	1"	1" - 11 1/2 H
T001294	C 921-16-16	1"5/8 - 12 H	1"1/4	1" - 11 1/2 H
T001295	C 921-16-20	1"5/8 - 12 H	1"1/4	1"1/4 - 11 1/2 H
T001296	C 921-20-20	1"7/8 - 12 H	1"1/2	1"1/4 - 11 1/2 H

L-921

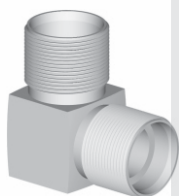
CODO A 90° ALOJAMIENTO VIOLA R. "UNF" Y R. CÓNICA "NPT" LARGO



Código Cañiflex	CÓDIGO	Rosca Extremo 1 UNF Ext.	P/ Tubo Diám. Ext.	Rosca Extremo 2 Cónica NPT Ext.
T001297	C L 921-2-2	7/16" - 20 H	1/4"	1/8" - 27 H
T001298	C L 921-2-4	7/16" - 20 H	1/4"	1/4" - 18 H
T001299	C L 921-4-4	9/16" - 18 H	3/8"	1/4" - 18 H
T001301	C L 921-4-6	9/16" - 18 H	3/8"	3/8" - 18 H
T001300	C L 921-6-4	3/4" - 16 H	1/2"	1/4" - 18 H
T001302	C L 921-6-6	3/4" - 16 H	1/2"	3/8" - 18 H
T001304	C L 921-6-8	3/4" - 16 H	1/2"	1/2" - 14 H
T001303	C L 921-8-6	7/8" - 14 H	5/8"	3/8" - 18 H
T001305	C L 921-8-8	7/8" - 14 H	5/8"	1/2" - 14 H
T001306	C L 921-10-8	1"1/16 - 12 H	3/4"	1/2" - 14 H
T001307	C L 921-10-12	1"1/16 - 12 H	3/4"	3/4" - 14 H
T001308	C L 921-12-12	1"3/16 - 12 H	7/8"	3/4" - 14 H
T001309	C L 921-14-16	1"5/16 - 12 H	1"	1" - 11 1/2 H

922

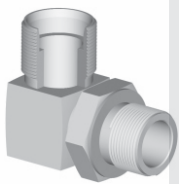
CODO A 90° ALOJAMIENTO VIOLA R. "UNF" EN AMBOS EXTREMOS



Código Cañiflex	CÓDIGO	Rosca Extremo 1 UNF Ext.	P/ Tubo Diám. Ext.	Rosca Extremo 2 UNF Ext.
T001310	C 922-1-1	3/8" - 24 H	3/16"	3/8" - 24 H
T030691	C 922-1-2	3/8" - 24 H	3/16" - 1/4"	7/16" - 20 H
T001311	C 922-2-2	7/16" - 20 H	1/4"	7/16" - 20 H
T001312	C 922-3-3	1/2" - 20 H	5/16"	1/2" - 20 H
T001313	C 922-4-4	9/16" - 18 H	3/8"	9/16" - 18 H
T001314	C 922-6-6	3/4" - 16 H	1/2"	3/4" - 16 H
T001315	C 922-8-8	7/8" - 14 H	5/8"	7/8" - 14 H
T001316	C 922-10-10	1"1/16 - 12 H	3/4"	1"1/16 - 12 H
T001317	C 922-12-12	1"3/16 - 12 H	7/8"	1"3/16 - 12 H
T001318	C 922-14-14	1"5/16 - 12 H	1"	1"5/16 - 12 H
T001319	C 922-16-16	1"5/8 - 12 H	1"1/4	1"5/8 - 12 H
T027479	C 922-20-20	1"7/8 - 12 H	1"1/2	1"7/8 - 12 H

928

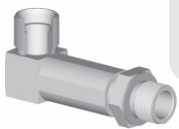
CODO A 90° A VIOLA R. "UNF" Y ASIENTO AROSELLO R. "UNF"



Código Cañiflex	CÓDIGO	Rosca Extremo 1 UNF Ext.	P/ Tubo Diám. Ext.	Rosca Extremo 2 UNF Ext.
T022516	C 928-2-2	7/16" - 20 H	1/4"	7/16" - 20 H
T001320	C 928-4-4	9/16" - 18 H	3/8"	9/16" - 18 H
T028517	C 928-4-6	9/16" - 18 H	3/8"	3/4" - 16 H
T001326	C 928-4-8	9/16" - 18 H	3/8"	7/8" - 14 H
T001321	C 928-6-4	3/4" - 16 H	1/2"	9/16" - 18 H
T001324	C 928-6-6	3/4" - 16 H	1/2"	3/4" - 16 H
T001327	C 928-6-8	3/4" - 16 H	1/2"	7/8" - 14 H
T001322	C 928-8-4	7/8" - 14 H	5/8"	9/16" - 18 H
T001325	C 928-8-6	7/8" - 14 H	5/8"	3/4" - 16 H
T001328	C 928-8-8	7/8" - 14 H	5/8"	7/8" - 14 H
T001330	C 928-8-10	7/8" - 14 H	5/8"	1"1/16 - 12 H
T001334	C 928-8-12	7/8" - 14 H	5/8"	1"3/16 - 12 H
T001329	C 928-10-8	1"1/16 - 12 H	3/4"	7/8" - 14 H
T001331	C 928-10-10	1"1/16 - 12 H	3/4"	1"1/16 - 12 H
T001335	C 928-10-12	1"1/16 - 12 H	3/4"	1"3/16 - 12 H
T022169	C 928-12-8	1"3/16 - 12 H	7/8"	7/8" - 14 H
T001332	C 928-12-10	1"3/16 - 12 H	7/8"	1"1/16 - 12 H
T001336	C 928-12-12	1"3/16 - 12 H	7/8"	1"3/16 - 12 H
T019468	C 928-14-8	1"5/16 - 12 H	1"	7/8" - 14 H
T001333	C 928-14-10	1"5/16 - 12 H	1"	1"1/16 - 12 H
T001337	C 928-14-12	1"5/16 - 12 H	1"	1"3/16 - 12 H
T001338	C 928-14-14	1"5/16 - 12 H	1"	1"5/16 - 12 H

L-928

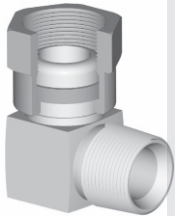
CODO A 90° A VIOLA R. "UNF" Y ASIENTO AROSELLO R. "UNF" LARGO



Código Cañiflex	CÓDIGO	Rosca Extremo 1 UNF Ext.	P/ Tubo Diám. Ext.	Rosca Extremo 2 UNF Ext.
T001339	CL 928-4-4	9/16" - 18 H	3/8"	9/16" - 18 H
T001341	CL 928-4-6	9/16" - 18 H	3/8"	3/4" - 16 H
T001340	CL 928-6-4	3/4" - 16 H	1/2"	9/16" - 18 H
T001342	CL 928-6-6	3/4" - 16 H	1/2"	3/4" - 16 H
T001344	CL 928-6-8	3/4" - 16 H	1/2"	7/8" - 14 H
T001343	CL 928-8-6	7/8" - 14 H	5/8"	3/4" - 16 H
T001345	CL 928-8-8	7/8" - 14 H	5/8"	7/8" - 14 H
T001347	CL 928-8-10	7/8" - 14 H	5/8"	1"1/16 - 12 H
T001346	CL 928-10-8	1"1/16 - 12 H	3/4"	7/8" - 14 H
T001348	CL 928-10-10	1"1/16 - 12 H	3/4"	1"1/16 - 12 H
T019432	CL 928-12-8	1"3/16 - 12 H	7/8"	7/8" - 14 H
T019430	CL 928-12-10	1"3/16 - 12 H	7/8"	1"1/16 - 12 H
T001350	CL 928-12-12	1"3/16 - 12 H	7/8"	1"3/16 - 12 H

931

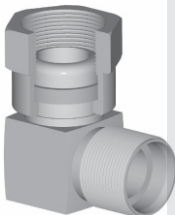
CODO A 90° H. GIRATORIA ALOJ. VIOLA R. "UNF" Y R. CÓNICA "NPT"



Código Cañiflex	CÓDIGO	Rosca Extremo 1 UNF Int.	P/ Tubo Diám. Ext.	Rosca Extremo 2 Cónica NPT Ext.
T001351	C 931-4-4	9/16" - 18 H	3/8"	1/4" - 18 H
T001353	C 931-4-6	9/16" - 18 H	3/8"	3/8" - 18 H
T001352	C 931-6-4	3/4" - 16 H	1/2"	1/4" - 18 H
T001354	C 931-6-6	3/4" - 16 H	1/2"	3/8" - 18 H
T001356	C 931-6-8	3/4" - 16 H	1/2"	1/2" - 14 H
T047840	C 931-8-4	7/8" - 14 H	5/8"	1/4" - 18 H
T001355	C 931-8-6	7/8" - 14 H	5/8"	3/8" - 18 H
T001357	C 931-8-8	7/8" - 14 H	5/8"	1/2" - 14 H
T001358	C 931-10-8	1"1/16 - 12 H	3/4"	1/2" - 14 H
T001359	C 931-10-12	1"1/16 - 12 H	3/4"	3/4" - 14 H
T001360	C 931-12-12	1"3/16 - 12 H	7/8"	3/4" - 14 H

932

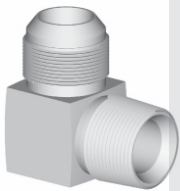
CODO A 90° ALOJAMIENTO VIOLA R. "UNF" EN AMBOS EXTREMOS



Código Cañiflex	CÓDIGO	Rosca Extremo 1 UNF Ext.	P/ Tubo Diám. Ext.	Rosca Extremo 2 UNF Ext.
T001362	C 932-4-4	9/16" - 18 H	3/8"	9/16" - 18 H
T044236	C 932-4-6	9/16" - 18 H	3/8" - 1/2"	3/4" - 16 H
T001363	C 932-6-4	3/4" - 16 H	1/2" - 3/8"	9/16" - 18 H
T001365	C 932-6-6	3/4" - 16 H	1/2"	3/4" - 16 H
T001367	C 932-6-8	3/4" - 16 H	1/2" - 5/8"	7/8" - 14 H
T001366	C 932-8-6	7/8" - 14 H	5/8" - 1/2"	3/4" - 16 H
T001368	C 932-8-8	7/8" - 14 H	5/8"	7/8" - 14 H
T001370	C 932-10-10	1"1/16 - 12 H	3/4"	1"1/16 - 12 H
T001371	C 932-12-12	1"3/16 - 12 H	7/8"	1"3/16 - 12 H
T001372	C 932-14-14	1"5/16 - 12 H	1"	1" 5/16 - 12 H

941

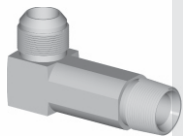
CODO A 90° ASIENTO JIC 37° R. "UNF" Y R. CÓNICA "NPT"



Código Cañiflex	CÓDIGO	Rosca Extremo 1 UNF Ext.	Rosca Extremo 2 Cónica NPT Ext.
T001373	C 941-2-2	7/16" - 20 H	1/8" - 27 H
T001376	C 941-2-4	7/16" - 20 H	1/4" - 18 H
T024478	C 941-2-6	7/16" - 20 H	3/8" - 18 H
T001374	C 941-3-2	1/2" - 20 H	1/8" - 27 H
T001377	C 941-3-4	1/2" - 20 H	1/4" - 18 H
T015467	C 941-3-6	1/2" - 20 H	3/8" - 18 H
T001375	C 941-4-2	9/16" - 18 H	1/8" - 27 H
T001378	C 941-4-4	9/16" - 18 H	1/4" - 18 H
T019031	C 941-4-4 PR 0,5 MM	9/16" - 18 H	1/4" - 18 H
T025557	C 941-4-4 PR 0,75 MM	9/16" - 18 H	1/4" - 18 H
T018876	C 941-4-4 PR 1,00 MM	9/16" - 18 H	1/4" - 18 H
T025061	C 941-4-4 PR 1,25 MM	9/16" - 18 H	1/4" - 18 H
T031040	C 941-4-4 PR 1,50 MM	9/16" - 18 H	1/4" - 18 H
T018875	C 941-4-4 PR 2,00 MM	9/16" - 18 H	1/4" - 18 H
T018880	C 941-4-4 C/VALVULA	9/16" - 18 H	1/4" - 18 H
T001381	C 941-4-6	9/16" - 18 H	3/8" - 18 H
T001384	C 941-4-8	9/16" - 18 H	1/2" - 14 H
T001379	C 941-6-4	3/4" - 16 H	1/4" - 18 H
T001382	C 941-6-6	3/4" - 16 H	3/8" - 18 H
T001385	C 941-6-8	3/4" - 16 H	1/2" - 14 H
T021672	C 941-6-12	3/4" - 16 H	3/4" - 14 H
T001380	C 941-8-4	7/8" - 14 H	1/4" - 18 H
T001383	C 941-8-6	7/8" - 14 H	3/8" - 18 H
T001386	C 941-8-8	7/8" - 14 H	1/2" - 14 H
T001389	C 941-8-12	7/8" - 14 H	3/4" - 14 H
T023574	C 941-8-16	7/8" - 14 H	1" - 11 1/2 H
T001387	C 941-10-8	1"1/16 - 12 H	1/2" - 14 H
T001390	C 941-10-12	1"1/16 - 12 H	3/4" - 14 H
T018803	C 941-10-16	1"1/16 - 12 H	1" - 11 1/2 H
T019447	C 941-10-20	1"1/16 - 12 H	1" 1/4 - 11 1/2 H
T001388	C 941-12-8	1"3/16 - 12 H	1/2" - 14 H
T001391	C 941-12-12	1"3/16 - 12 H	3/4" - 14 H
T001393	C 941-12-16	1"3/16 - 12 H	1" - 11 1/2 H
T001392	C 941-14-12	1"5/16 - 12 H	3/4" - 14 H
T001394	C 941-14-16	1"5/16 - 12 H	1" - 11 1/2 H
T023308	C 941-14-20	1"5/16 - 12 H	1"1/4 - 11 1/2 H
T001395	C 941-16-16	1"5/8 - 12 H	1" - 11 1/2 H
T001396	C 941-16-20	1"5/8 - 12 H	1"1/4 - 11 1/2 H
T001397	C 941-20-20	1"7/8 - 12 H	1"1/4 - 11 1/2 H
T027370	C 941-20-24	1"7/8 - 12 H	1"1/2 - 11 1/2 H
T030190	C 941-24-24	2"1/2 - 12 H	1"1/2 - 11 1/2 H
T026351	C 941-24-32	2"1/2 - 12 H	2" - 11 1/2 H

L-941

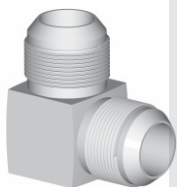
CODO A 90° ASIENTO JIC 37° R. "UNF" Y R. CÓNICA "NPT" LARGO



Código Cañiflex	CÓDIGO	Rosca Extremo 1 UNF Ext.	Rosca Extremo 2 Cónica NPT Ext.
T001398	CL 941-2-2	7/16" - 20 H	1/8" - 27 H
T001400	CL 941-2-4	7/16" - 20 H	1/4" - 18 H
T001399	CL 941-4-2	9/16" - 18 H	1/8" - 27 H
T001401	CL 941-4-4	9/16" - 18 H	1/4" - 18 H
T025062	CL 941-4-4 PR 1,25 MM	9/16" - 18 H	1/4" - 18 H
T001403	CL 941-4-6	9/16" - 18 H	3/8" - 18 H
T026319	CL 941-4-8	9/16" - 18 H	1/2" - 14 H
T001402	CL 941-6-4	3/4" - 16 H	1/4" - 18 H
T001404	CL 941-6-6	3/4" - 16 H	3/8" - 18 H
T001406	CL 941-6-8	3/4" - 16 H	1/2" - 14 H
T001405	CL 941-8-6	7/8" - 14 H	3/8" - 18 H
T001407	CL 941-8-8	7/8" - 14 H	1/2" - 14 H
T001408	CL 941-10-8	1"1/16 - 12 H	1/2" - 14 H
T001409	CL 941-10-12	1"1/16 - 12 H	3/4" - 14 H
T001410	CL 941-12-12	1"3/16 - 12 H	3/4" - 14 H
T001411	CL 941-14-12	1"5/16 - 12 H	3/4" - 14 H
T001412	CL 941-14-16	1"5/16 - 12 H	1" - 11 1/2 H

944

CODO A 90° ASIENTO JIC 37° R. "UNF" EN AMBOS EXTREMOS



Código Cañiflex	CÓDIGO	Rosca Extremo 1 UNF Ext.	Rosca Extremo 2 UNF Ext.
T001414	C 944-2-2	7/16" - 20 H	7/16" - 20 H
T001415	C 944-3-3	1/2" - 20 H	1/2" - 20 H
T001416	C 944-4-4	9/16" - 18 H	9/16" - 18 H
T025321	C 944-4-8	9/16" - 18 H	7/8" - 14 H
T001417	C 944-6-6	3/4" - 16 H	3/4" - 16 H
T025320	C 944-6-8	3/4" - 16 H	7/8" - 14 H
T001418	C 944-8-8	7/8" - 14 H	7/8" - 14 H
T001419	C 944-10-10	1"1/16 - 12 H	1"1/16 - 12 H
T001420	C 944-12-12	1"3/16 - 12 H	1"3/16 - 12 H
T001421	C 944-14-14	1"5/16 - 12 H	1"5/16 - 12 H
T015750	C 944-16-14	1"5/8 - 12 H	1"5/16 - 12 H
T001422	C 944-16-16	1"5/8 - 12 H	1"5/8 - 12 H
T033410	C 944-20-20	1"7/8 - 12 H	1"7/8 - 12 H

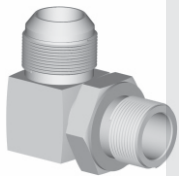
L-944

CODO A 90° ASIENTO JIC 37° R. "UNF" Y ASIENTO JIC 37° R. "UNF" LARGO

Código Cañiflex	CÓDIGO	Rosca Extremo 1 UNF Ext.	Rosca Extremo 2 UNF Ext.
T025317	C L 944-6-8	3/4" - 16 H	7/8" - 14 H
T025319	C L 944-8-8	7/8" - 14 H	7/8" - 14 H

948

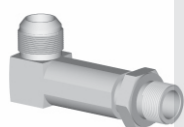
CODO A 90° ASIENTO JIC 37° R. "UNF" Y ASIENTO AROSELLO R. "UNF"



Código Cañiflex	CÓDIGO	Rosca Extremo 1 UNF Ext.	Rosca Extremo 2 UNF Ext.
T001423	C 948-2-2	7/16" - 20 H	7/16" - 20 H
T001424	C 948-2-3	7/16" - 20 H	1/2" - 20 H
T001427	C 948-2-4	7/16" - 20 H	9/16" - 18 H
T036168	C 948-3-2	1/2" - 20 H	7/16" - 20 H
T001425	C 948-3-3	1/2" - 20 H	1/2" - 20 H
T001428	C 948-3-4	1/2" - 20 H	9/16" - 18 H
T018329	C 948-4-2	9/16" - 18 H	7/16" - 20 H
T001426	C 948-4-3	9/16" - 18 H	1/2" - 20 H
T001429	C 948-4-4	9/16" - 18 H	9/16" - 18 H
T001433	C 948-4-6	9/16" - 18 H	3/4" - 16 H
T015751	C 948-4-8	9/16" - 18 H	7/8" - 14 H
T001430	C 948-6-4	3/4" - 16 H	9/16" - 18 H
T001432	C 948-6-5	3/4" - 16 H	5/8" - 18 H
T001434	C 948-6-6	3/4" - 16 H	3/4" - 16 H
T001436	C 948-6-8	3/4" - 16 H	7/8" - 14 H
T020628	C 948-6-10	3/4" - 16 H	1"1/16 - 12 H
T001431	C 948-8-4	7/8" - 14 H	9/16" - 18 H
T001435	C 948-8-6	7/8" - 14 H	3/4" - 16 H
T001437	C 948-8-8	7/8" - 14 H	7/8" - 14 H
T001440	C 948-8-10	7/8" - 14 H	1"1/16 - 12 H
T001444	C 948-10-12	1"1/16 - 12 H	1"3/16 - 12 H
T001224	C 948-10-6	1"1/16 - 12 H	3/4" - 16 H
T001438	C 948-10-8	1"1/16 - 12 H	7/8" - 14 H
T001441	C 948-10-10	1"1/16 - 12 H	1"1/16 - 12 H
T001445	C 948-10-12	1"1/16 - 12 H	1"3/16 - 12 H
T001439	C 948-12-8	1"3/16 - 12 H	7/8" - 14 H
T001442	C 948-12-10	1"3/16 - 12 H	1"1/16 - 12 H
T001446	C 948-12-12	1"3/16 - 12 H	1"3/16 - 12 H
T001448	C 948-12-14	1"3/16 - 12 H	1"5/16 - 12 H
T001443	C 948-14-10	1"5/16 - 12 H	1"1/16 - 12 H
T001447	C 948-14-12	1"5/16 - 12 H	1"3/16 - 12 H
T001449	C 948-14-14	1"5/16 - 12 H	1"5/16 - 12 H
T020854	C 948-14-16	1"5/16 - 12 H	1"5/8 - 12 H
T024474	C 948-14-20	1"5/16 - 12 H	1"7/8 - 12 H
T001542	C 948-16-16	1"5/8 - 12 H	1"5/8 - 12 H
T001543	C 948-20-14	1"7/8 - 12 H	1"5/16 - 12 H
T029831	C 948-20-20	1"7/8 - 12 H	1"7/8 - 12 H
T030191	C 948-24-20	2"1/2 - 12 H	2"1/2 - 12 H
T030192	C 948-24-24	2"1/2 - 12 H	2"1/2 - 12 H

L-948

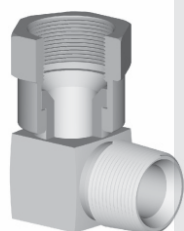
CODO A 90° ASIENTO JIC 37° R. "UNF" Y ASIENTO AROSELLO R. "UNF" LARGO



Código Cañiflex	CÓDIGO	Rosca Extremo 1 UNF Ext.	Rosca Extremo 2 UNF Ext.
T001450	C L 948-4-4	9/16" - 18 H	9/16" - 18 H
T001452	C L 948-4-6	9/16" - 18 H	3/4" - 16 H
T017535	C L 948-4-8	9/16" - 18 H	7/8" - 14 H
T001451	C L 948-6-4	3/4" - 16 H	9/16" - 18 H
T001453	C L 948-6-6	3/4" - 16 H	3/4" - 16 H
T001455	C L 948-6-8	3/4" - 16 H	7/8" - 14 H
T001454	C L 948-8-6	7/8" - 14 H	3/4" - 16 H
T001456	C L 948-8-8	7/8" - 14 H	7/8" - 14 H
T018532	C L 948-8-10	7/8" - 14 H	1"1/16 - 12 H
T001457	C L 948-10-8	1"1/16 - 12 H	7/8" - 14 H
T001458	C L 948-10-10	1"1/16 - 12 H	1"1/16 - 12 H
T001459	C L 948-10-12	1"1/16 - 12 H	1"3/16 - 12 H
T026125	C L 948-12-8	1"3/16 - 12 H	7/8" - 14 H
T027655	C L 948-14-8	1"5/16 - 12 H	7/8" - 14 H
T023358	C L 948-12-10	1"3/16 - 12 H	1"1/16 - 12 H
T001460	C L 948-12-12	1"3/16 - 12 H	1"3/16 - 12 H
T017523	C L 948-14-10	1"5/16 - 12 H	1"5/16 - 12 H

951

CODO A 90° H. GIRATORIA ASIENTO JIC 37° R. "UNF" Y R. CÓNICA "NPT"



Código Cañiflex	CÓDIGO	Rosca Extremo 1 UNF Int.	Rosca Extremo 2 Cónica NPT Ext.
T001461	C 951-4-4	9/16" - 18 H	1/4" - 18 H
T001463	C 951-4-6	9/16" - 18 H	3/8" - 18 H
T030006	C 951-4-8	9/16" - 18 H	1/2" - 14 H
T001462	C 951-6-4	3/4" - 16 H	1/4" - 18 H
T001464	C 951-6-6	3/4" - 16 H	3/8" - 18 H
T001466	C 951-6-8	3/4" - 16 H	1/2" - 14 H
T001465	C 951-8-6	7/8" - 14 H	3/8" - 18 H
T001467	C 951-8-8	7/8" - 14 H	1/2" - 14 H
T001468	C 951-10-8	1"1/16 - 12 H	1/2" - 14 H
T001469	C 951-10-10	1"1/16 - 12 H	5/8" - 14 H
T001470	C 951-10-12	1"1/16 - 12 H	3/4" - 14 H
T001471	C 951-12-12	1"3/16 - 12 H	3/4" - 14 H
T041950	C 951-12-16	1"3/16 - 12 H	1" - 11 1/2 H
T019454	C 951-14-12	1"5/16 - 12 H	3/4" - 14 H
T019453	C 951-14-16	1"5/16 - 12 H	1" - 11 1/2 H

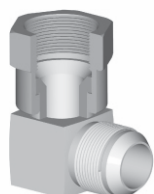
L-951

CODO A 90° H. GIRATORIA ASIENTO JIC 37° R. "UNF" Y R. CÓNICA "NPT" LARGO

Código Cañiflex	CÓDIGO	Rosca Extremo 1 UNF Int.	Rosca Extremo 2 Cónica NPT Ext.
T028000	C L 951-6-4	3/4" - 16 H	1/4" - 18 H
T022403	C L 951-6-8	3/4" - 16 H	1/2" - 14 H
T027000	C L 951-6-8 PR 2,00 MM	3/4" - 16 H	1/2" - 14 H

954

CODO A 90° H. GIRATORIA ASIENTO JIC 37° R. "UNF" Y ASIENTO JIC 37° R. "UNF"



Código Cañiflex	CÓDIGO	Rosca Extremo 1 UNF Int.	Rosca Extremo 2 UNF Ext.
T030667	C 954-3-4	1/2" - 20 H	9/16" - 18 H
T019466	C 954-4-3	9/16" - 18 H	1/2" - 20 H
T001472	C 954-4-4	9/16" - 18 H	9/16" - 18 H
T026283	C 954-4-6	9/16" - 18 H	3/4" - 16 H
T001473	C 954-6-6	3/4" - 16 H	3/4" - 16 H
T001474	C 954-8-8	7/8" - 14 H	7/8" - 14 H
T023494	C 954-14-8	1"5/16 - 12 H	7/8" - 14 H
T001475	C 954-10-10	1"1/16 - 12 H	1"1/16 - 12 H
T001476	C 954-12-12	1"3/16 - 12 H	1"3/16 - 12 H
T001477	C 954-14-14	1"5/16 - 12 H	1"5/16 - 12 H
T001478	C 954-16-16	1"5/8 - 12 H	1"5/8 - 12 H
T029828	C 954-20-20	1"7/8 - 12 H	1"7/8 - 12 H
T030193	C 954-24-24	2"1/2 - 12 H	2"1/2 - 12 H

958

CODO A 90° H. GIRATORIA ASIENTO JIC 37° R. "UNF" Y ASIENTO AROSELLO R. "UNF"

Código Cañiflex	CÓDIGO	Rosca Extremo 1 UNF Ext.	Rosca Extremo 2 UNF Ext.
T033424	C 958-6-6	3/4" - 16 H	3/4" - 16 H
T029348	C 958-6-8	3/4" - 16 H	7/8" - 14 H
T021993	C 958-10-8	1"1/16 - 12 H	7/8" - 14 H

971

CODO A 90° H. GIRATORIA ASIENTO SAE 30° R. "NPS" Y ASIENTO CÓNICO R. "NPT"

Código Cañiflex	CÓDIGO	Rosca Extremo 1 NPS Int.	Rosca Extremo 2 NPT Ext.
T001479	C 971-4-4	1/4" - 18 H	1/4" - 18 H
T001481	C 971-4-6	1/4" - 18 H	3/8" - 18 H
T001480	C 971-6-4	3/8" - 18 H	1/4" - 18 H
T001482	C 971-6-6	3/8" - 18 H	3/8" - 18 H
T001484	C 971-6-8	3/8" - 18 H	1/2" - 14 H
T001483	C 971-8-6	1/2" - 14 H	3/8" - 18 H
T001485	C 971-8-8	1/2" - 14 H	1/2" - 14 H
T001486	C 971-12-8	3/4" - 14 H	1/2" - 14 H
T001487	C 971-12-12	3/4" - 14 H	3/4" - 14 H
T001488	C 971-16-16	1" - 11 1/2 H	1" - 11 1/2 H

978

CODO A 90° H. GIRATORIA ASIENTO SAE 30° R. "NPS" Y ASIENTO AROSELLO R. "UNF"

Código Cañiflex	CÓDIGO	Rosca Extremo 1 NPS Int.	Rosca Extremo 2 UNF Ext.
T001489	C 978-4-4	1/4" - 18 H	9/16" - 18 H
T001491	C 978-4-6	1/4" - 18 H	3/4" - 16 H
T001490	C 978-6-4	3/8" - 18 H	9/16" - 18 H
T001494	C 978-6-8	3/8" - 18 H	7/8" - 14 H
T001493	C 978-8-6	1/2" - 14 H	3/4" - 16 H
T001495	C 978-8-8	1/2" - 14 H	7/8" - 14 H
T019455	C 978-12-10	3/4" - 14 H	1"1/16" - 12 H

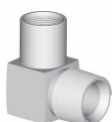
L 978

CODO A 90° H. GIRATORIA ASIENTO SAE 30° R. "NPS" Y ASIENTO AROSELLO R. "UNF" LARGO

Código Cañiflex	CÓDIGO	Rosca Extremo 1 NPS Int.	Rosca Extremo 2 UNF Ext.
T001499	C L 978-4-4	1/4" - 18 H	9/16" - 18 H
T001500	C L 978-4-6	1/4" - 18 H	3/4" - 16 H
T001501	C L 978-6-6	3/8" - 18 H	3/4" - 16 H
T001503	C L 978-6-8	3/8" - 18 H	7/8" - 14 H
T001502	C L 978-8-6	1/2" - 14 H	3/4" - 16 H
T001504	C L 978-8-8	1/2" - 14 H	7/8" - 14 H

981

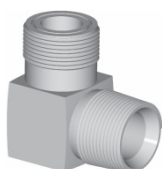
CODO A 90° ASIENTO AROSELLO R. "UNF" INTERIOR Y R. CÓNICA "NPT"



Código Cañiflex	CÓDIGO	Rosca Extremo 1 UNF Int.	Rosca Extremo 2 Cónica NPT Ext.
T001506	C 981-4I-4	9/16" - 18 H	1/4" - 18 H
T001507	C 981-6I-6	3/4" - 16 H	3/8" - 18 H
T001509	C 981-8I-8	7/8" - 14 H	1/2" - 14 H

AF-981

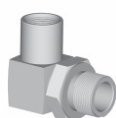
CODO A 90° ASIENTO AROSELLO "FRONTAL" ORFS R. "UNF" Y R. CÓNICA "NPT"



Código Cañiflex	CÓDIGO	Rosca Extremo 1 UNF Ext.	Rosca Extremo 2 Cónica NPT Ext.
T001510	C AF 981-4-2	9/16" - 18 H	1/8" - 27 H
T001511	C AF 981-4-4	9/16" - 18 H	1/4" - 18 H
T001513	C AF 981-4-6	9/16" - 18 H	3/8" - 18 H
T001512	C AF 981-5-4	11/16" - 16 H	1/4" - 18 H
T001514	C AF 981-5-6	11/16" - 16 H	3/8" - 18 H
T001515	C AF 981-5-8	11/16" - 16 H	1/2" - 14 H
T001516	C AF 981-7-6	13/16" - 16 H	3/8" - 18 H
T001517	C AF 981-7-8	13/16" - 16 H	1/2" - 14 H
T001518	C AF 981-9-8	1" - 14 H	1/2" - 14 H
T019445	C AF 981-12-10	1"3/16" - 12 H	5/8" - 14 H
T001519	C AF 981-12-12	1"3/16" - 12 H	3/4" - 14 H

988

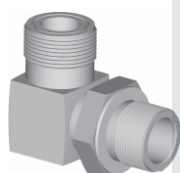
CODO A 90° ASIENTO AROSELLO R. "UNF" INTERIOR Y ASIENTO AROSELLO R. "UNF"



Código Cañiflex	CÓDIGO	Rosca Extremo 1 UNF Int.	Rosca Extremo 2 UNF Ext.
T001520	C 988-4I-4	9/16" - 18 H	9/16" - 18 H
T001521	C 988-6I-6	3/4" - 16 H	3/4" - 16 H
T001522	C 988-6I-8	3/4" - 16 H	7/8" - 14 H
T001523	C 988-8I-8	7/8" - 14 H	7/8" - 14 H

AF-988

CODO A 90° AROSELLO "FRONTAL" ORFS R. "UNF" Y ASIENTO AROSELLO R. "UNF"



Código Cañiflex	CÓDIGO	Rosca Extremo 1 UNF Ext.	Rosca Extremo 2 UNF Ext.
T001524	C AF 988-4-2	9/16" - 18 H	7/16" - 20 H
T001525	C AF 988-4-4	9/16" - 18 H	9/16" - 18 H
T001526	C AF 988-4-6	9/16" - 18 H	3/4" - 16 H
T001527	C AF 988-5-4	11/16" - 16 H	9/16" - 18 H
T001528	C AF 988-5-6	11/16" - 16 H	3/4" - 16 H
T001529	C AF 988-5-8	11/16" - 16 H	7/8" - 14 H
T001530	C AF 988-7-4	13/16" - 16 H	9/16" - 18 H
T001531	C AF 988-7-6	13/16" - 16 H	3/4" - 16 H
T001532	C AF 988-7-8	13/16" - 16 H	7/8" - 14 H
T001533	C AF 988-7-10	13/16" - 16 H	1"1/16" - 12 H
T001534	C AF 988-9-8	1" - 14 H	7/8" - 14 H
T030236	C AF 988-9-10	1" - 14 H	1"1/16" - 12 H
T027890	C AF 988-9-12	1" - 14 H	1"3/16" - 12 H
T001535	C AF 988-12-10	1"3/16" - 12 H	1"1/16" - 12 H
T001536	C AF 988-12-12	1"3/16" - 12 H	1"3/16" - 12 H
T001537	C AF 988-12-14	1"3/16" - 12 H	1"5/16" - 12 H
T001538	C AF 988-15-10	1"7/16" - 12 H	1"1/16" - 12 H
T001539	C AF 988-15-14	1"7/16" - 12 H	1"5/16" - 12 H

988-AF

CODO A 90° AROSELLO FRONTAL ORFS R. "UNF" EN AMBOS EXTREMOS

Código Cañiflex	CÓDIGO	Rosca Extremo 1 UNF Ext.	Rosca Extremo 2 UNF Ext.
T001524	C 988-AF5-AF5	11/16" - 16 H	11/16" - 16 H
T001525	C 988-AF7-AF7	13/16" - 16 H	13/16" - 16 H

AF-9P8

CODO A 90° H. GIRATORIA ORFS R. "UNF" Y R. ORFS "UNF"

Código Cañiflex	CÓDIGO	Rosca Extremo 1 UNF Int.	Rosca Extremo 2 UNF Ext.
T039117	C AF 9P8-4-4	9/16" - 18 H	9/16" - 18 H
T036222	C AF 9P8-5-5	11/16" - 16 H	11/16" - 16 H
T036929	C AF 9P8-7-7	13/16" - 16 H	13/16" - 16 H
T036221	C AF 9P8-9-9	1" - 14 H	1" - 14 H
T036220	C AF 9P8-12-12	1"3/16" - 12 H	1"3/16" - 12 H



IATF 16949



Alcance:

Casa Central

Comercialización de terminales, accesorios, mangueras y cañerías oleohidráulicas.

Comercialización de kit de "circuitos oleohidráulicos" para fabricantes de equipos originales (OEM).

Alcance:

Planta Parque Industrial "La Victoria"

Diseño, Desarrollo y Manufactura de terminales, accesorios, ensambles de mangueras y cañerías oleohidráulicas.

Diseño, Desarrollo y Manufactura de kit de "circuitos oleohidráulicos" para fabricantes de equipos originales (OEM).

